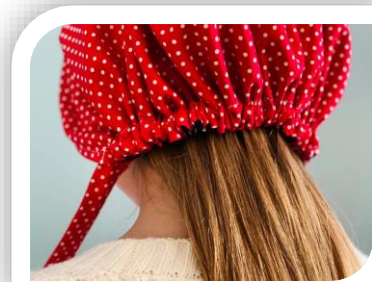




# Bonnet Cap Tutorial

Reversible and can be worn many different ways!



## Materials Needed

### Fabric:

- ☐ (2) 18"x22" cotton (= a ½ yard **OR** 2 Fat Quarters)
- ☐ (2) 2.5"x22" fabric strips **OR**  
(2) 22" pieces of any ribbon (For the ties)

### Other:

- ☐ 8" piece of elastic (3/8" works best)
- ☐ Safety Pin **OR** a flexible bodkin

Grab your (2) fabrics that measure 18"x22". Place them **RIGHT SIDES together.**

*Remember this cap is reversible, so choose cute fabrics for both sides!*



On one of the long 22" sides, mark 1" from each side of fabric. Sew from that inch towards the middle on both sides BUT do not stitch all the way across. You want to leave an opening big enough in the middle because that is where you will flip the fabric inside out later on.

*NOTE: This piece will go along your forehead, so be mindful of that if using directional fabric!*





Fold your fabric in half HOTDOG style.



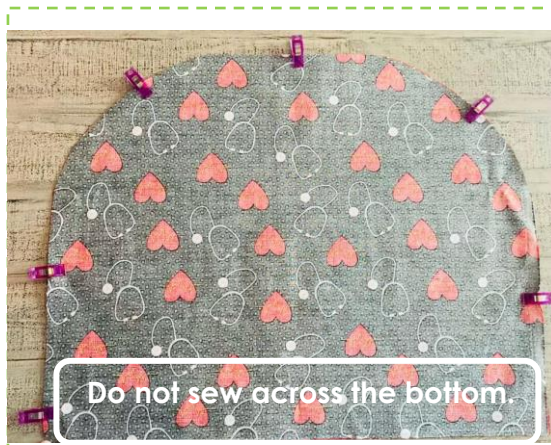
Measure 6 inches from the top, and cut a curve in your fabric. It does not need to be a big or perfect curve!



Open the fabric back up and sew all around the sides using a 1/4" seam allowance.

*TIP: Use SMALL stitches – it will be easier to turn corners!*

*NOTE: You will have a hole created on the sides at this point that will fit the ties!*





Turn your fabric right side out and iron flat.

*TIP: I use my hands, chopsticks or a bodkin to smoothen the edges inside of the fabric after it is turned right side out.*



Fold in the fabric opening you used to flip the fabric right side out, and sew it closed.



Next, you will create a casing to put your ties through.

Measure approximately 1.25 inches from the sides and sew a casing until you get to the other side of the cap. It does not have to be a perfect measurement!



# Making the cap ties!

**NOTE: If you are using ribbon as the cap ties, skip to step 3!**

Get your 2.5" x 22" fabric pieces.

1

Fold each in half and sew a tube.

Turn the tubes inside out using a safety pin.



2

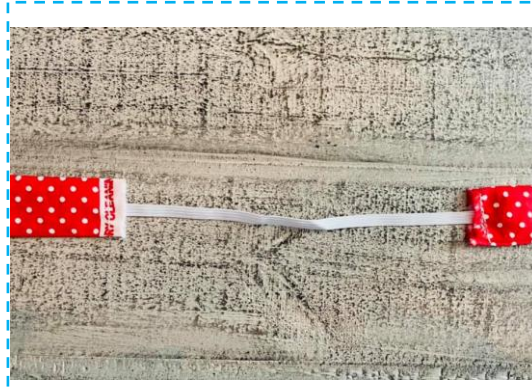
Fold in ONE of your tube ends about 1/2 an inch and sew it closed. One side of the tube should remain open.

Do this for both strips!



3

Get your 8" piece of elastic and sew it 1/2" into the OPEN end of your tubes or sew on the end of your ribbons.



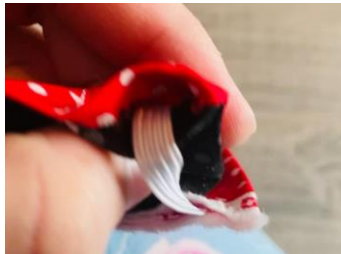
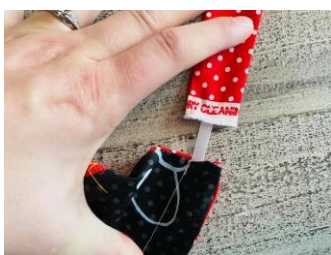


Using a safety pin or flexible bodkin, thread your ties through the casing tube until you reach the other side.

NOTE: You should have a piece of the tie coming out of each side with the elastic hidden in the fabric.



Fold in both of the casing tube ends  $\frac{1}{2}$  an inch and press. Pin your ties in place at each tube end, with about  $\frac{1}{2}$ " of your ties tucked into the casing. Sew this closed.



**You are DONE!**

I would **LOVE** to see your creation. Feel free to message me a photo or leave it in a review so other crafters can see too!

