

^----- Place on Fold -----^

Ladies Prairie Bonnet Pattern

2

Leave this side open to turn

3/8" Seam Allowance

Cut 2 on Fold
Cut 2 interfacing on Fold

Adorie's Designs

adorie@att.net

©2009 by: Adorie Rhodes

Bonnet Brim

Adult Size

^Place on Fold ^

Cut 2 on Fold

Actual Size:
2 3/8" x 10"

Ladies Prairie Bonnet Pattern

3/8" Seam Allowance

1

3/8" Seam Allowance

Bonnet Ties

Adult Size

Adorie's Designs
adorie@att.net

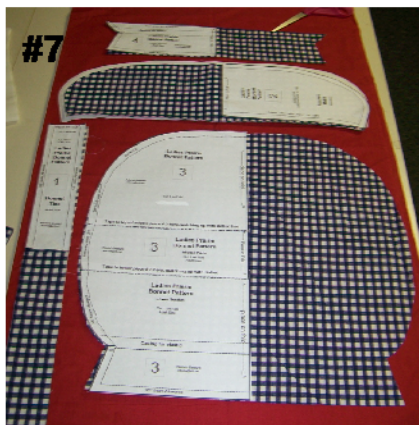
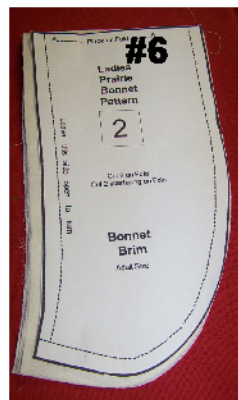
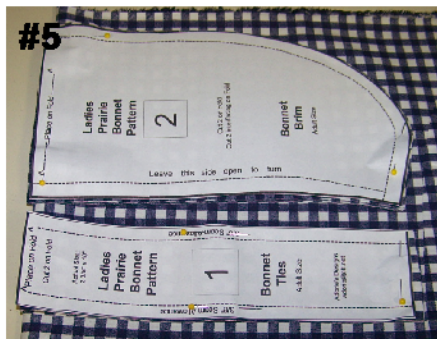
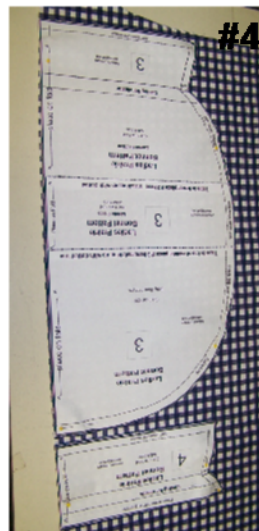
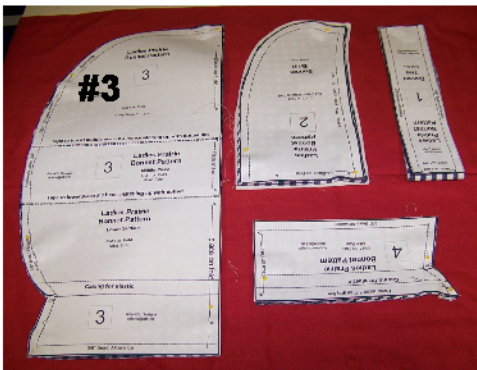
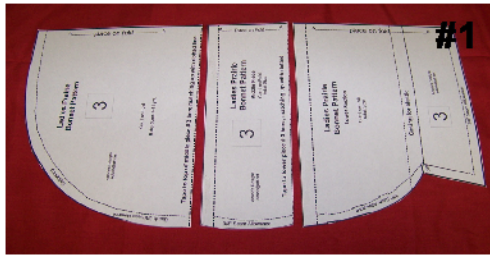
©2009 by: Adorie Rhodes

LADIES PRAIRIE BONNET PDF PATTERN

General

Instructions:

All pieces are sewn with a 3/8" seam allowance. When cutting items out make sure not to cut too close to pattern and cut the pattern away. All pattern pieces include the 3/8" seam allowance. Instruction #'s and pictures correlate with each other. **Please read all instructions before you begin.**



Cut out all paper pattern pieces

- 1 - Bonnet Ties
- 2 - Bonnet Brim
- 3 - Bonnet Back (in 3 pieces)
- 4 - Back Facing

Because the #3 bonnet back is in three pieces you will want to tape it together now, as seen in the picture. #1 and #2.

3. These are all of your pattern pieces.

Pattern Layout

You will need:

- 1 yard of cotton fabric
- 1/4 yard of solid stiff cotton fabric for interfacing.
- 8 1/2" piece of 1/4" elastic.

4. Place bonnet back and bonnet back facing on the fold and cut it out.

5. take the remaining fabric and fold toward other cut edge and cut two of each bonnet brim and bonnet ties on the fold at the same time.

6. Cut your bonnet brim stiffing out, by placing two thickness of stiff fabric together on the fold and cutting around pattern.

7. This is what you should have cut out before you begin sewing.

LADIES PRAIRIE BONNET PDF PATTERN



For this page you will need pattern pieces #1 bonnet ties and #2 bonnet brim.

1. Fold fabric piece #1 bonnet ties in half length wise.

2. Sew down long edge and across one end.

3. Turn right side out and press flat with a hot iron.

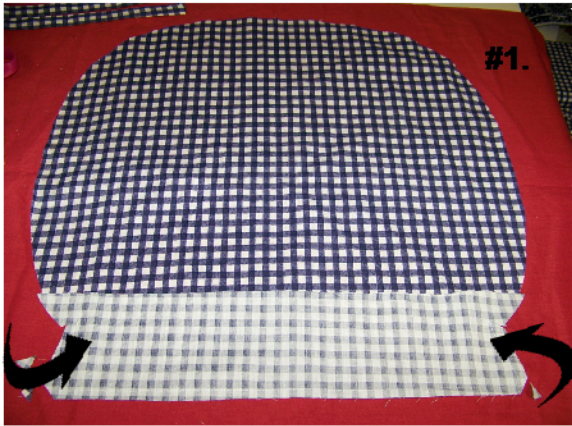
4. Get fabric piece #2 bonnet brim and stiffening piece to match. Place the two fabric pieces right sides together and put one piece of stiffening on outside front and back of fabric pieces pin around all three edges.

5. Sew around three edges leaving the the marked edge open. Trim half the seam off making the three edges even.

6. Turn right side out and press flat with a hot iron.

Adorie's Designs
adorie@att.net

LADIES PRAIRIE BONNET PDF PATTERN



For this page you will need:

Pieces #3 Bonnet Back

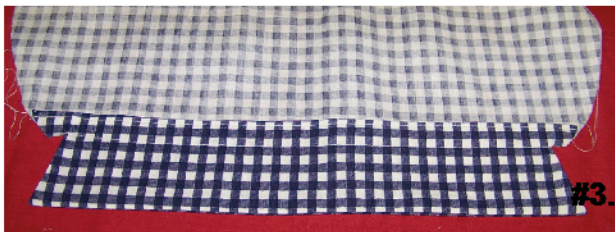
#4 Back Facing

1- 8 1/2" piece of 1/4" elastic

1. Sew #3 Bonnet back and #4 back facing right sides together start sewing where you clipped it down the side and across the bottom straight edge and up the side to the clipped spot on the other side.



2. Turn right side out press flat. Now turn top edge in on back facing piece down to fold line as marked on back facing pattern piece press flat. When you have finished it should look like the picture.



3. Top stitch the elastic casing placement lines one will be sewn from each clip on the sides and the other will be sewn on the fold line of the back facing as shown on the back facing pattern piece.



4. Get your 8 12" elastic and fold it under about 1/4" and put your safety pin on it.

5. Start safety pin in one side of casing until end of elastic is just slightly showing and pin in place.



6. Finish running elastic through casing to the other side, pull slightly out and pin in place and take safety pin out of elastic.

7. Mark the center top of bonnet back by folding it in half with a pin, you will use this later.

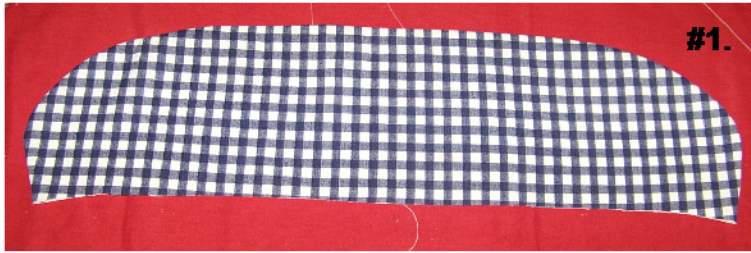


© 2009 by: Adorie Rhodes

Adorie's Designs

adorie@att.net

LADIES PRAIRIE BONNET PDF PATTERN



Sewing your bonnet together:
You will need all your pieces that you made on previous pages.



1. Find the center of the bonnet brim, simply by folding it in half and creasing it and place a pin on one side through the first two thickness of fabric.

2. Do a gathering stitch around the bonnet back starting at the elastic casing and sewing around the top to the elastic casing on the other side.



3. Pin the bonnet ties folded in half lengthwise on each end of the bonnet brim, same side as you placed the center pin, sew in place and remove pins.



4. Begin pinning the brim and the back pieces together. Start in the center of both and pin around to the sides away to the brim seams on both sides.

5. Pin away around making sure your gathers are evenly pinned around brim edge.



6. Sew the two together straightening gathers as you go. Remove the pins.

LADIES PRAIRIE BONNET PDF PATTERN



1. Now that your brim and back are sewn together.

2. Put on end of ironing board, turn under to match up with seam and press under the raw edge on the unsewed brim edge.



3. Pin around inside of bonnet, where you just pressed to keep it from slipping when you top stitch it together.

4. This is what your bonnet tie should look like sewn in place.



5. Turn right side out and top stitch along pinned edge about 1/8" from edge. Remove pins and you are finished.



Yea! You are finished!

